

Jayco | Seneca & Seneca Prestige Class C Motorhome

# SENECA & SENECA PRESTIGE

POWER AND LUXURY COMBINED



**2+3**  
YEAR | YEAR  
WARRANTY

# INTERIOR DESIGN



## RICHMOND



Wood



Floor



Countertop



Main Fabric



Furniture

## CROSSVILLE



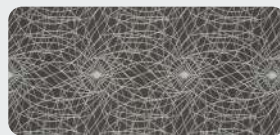
Wood



Floor



Countertop



Main Fabric



Furniture

**37K** OPTIONS: A, D



**37L** OPTIONS: A, B



**37M** OPTIONS: A, C, D



**37RB** OPTIONS: A, B, D



**37TS** OPTIONS: A, B, D



**OPTIONS**

**A**



12 Cu. Ft. Fridge

**B**



Theater Sofa

**C**



Hide-a-bed

**D**



Freestanding Dinette

# EXTERIOR SELECTIONS



Acadia Full-Body Paint



Blue Spruce Full-Body Paint



Mahogany Full-Body Paint



Yellowwood Full-Body Paint

# STANDARDS & OPTIONS

## CUSTOMER VALUE PACKAGE

JRIDE® PREMIUM: Computer-balanced driveshaft, rear air suspension, heavy-duty rear stabilizer bar, full air brakes, SACHS shocks  
 One-piece, seamless, fiberglass front and rear caps  
 Automotive-bonded, panoramic window in front cap with power shade  
 Dual-pane, tinted, safety-glass windows  
 (2) 15,000 BTU A/C units with heat pumps  
 Electric patio awning with LED lights  
 2,000-watt pure sine wave inverter  
 Power cord reel with 50-amp service  
 Girard® tankless LP water heater  
 Sony® infotainment center with Apple® CarPlay and Android Auto™  
 Backup and side-view cameras  
 21 cu.ft. residential refrigerator with ice and water in door  
 Convection microwave oven

## DRIVING

Freightliner® S2RV chassis  
 GVWR- 31,000 lb.  
 GCWR- 43,000 lb.  
 Cummins® ISB 6.7L 360 HP diesel engine with 800 ft.-lb. torque  
 Allison® 3000 MH automatic transmission  
 185-amp alternator  
 G-rated highway tires- 275/80R22.5  
 Alcoa® aluminum rims  
 Engine exhaust brake  
 12,000-lb. rear hitch receiver  
 7-pin plug  
 Dual 12V chassis batteries  
 100 gal. fuel tank  
 10 gal. DEF tank  
 Deluxe heated, remote-controlled, side-view mirrors  
 Power windows and door locks  
 Tilt steering wheel  
 A/C and cruise control  
 Auxiliary start switch

## EXTERIOR

StrongholdVBL™ roof, floor and sidewalls  
 Bead-foam insulation (R-24 max roof, R-9 max floor and R-5 max walls)  
 One-piece, crowned fiberglass roof  
 Premium Sikkens full-body paint  
 Automatic hydraulic leveling jacks  
 Entrance door with industry's largest travel-view window  
 Electric-powered entrance step  
 Slideout cover awnings  
 Exterior entertainment center with outside speakers, LED TV mounted on swivel bracket and single-disc DVD/CD/AM/FM radio  
 Winegard® In-motion satellite dish  
 Lockable, pass-through storage compartments with metal slam latches  
 24.5 gal. propane tank (83 lb.)  
 LP quick-connect hookup  
 Thetford® Sani-Con Turbo Macerator system  
 Exterior utility center  
 Winterization drain system  
 Black tank flush

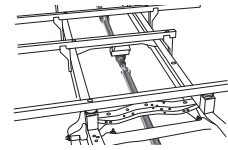
Outside shower  
 12V demand water pump  
 Onan® 8,000-watt Quiet Diesel generator and auto-gen start  
 Transfer switch with reverse polarity protection  
 (4) 6V AGM (220Ah) house batteries on slideout tray  
 190W solar panel with dual controller  
 Flush-mount LED marker lights  
 Third brake light  
 Porch light

## INTERIOR

Custom-molded ABS surround in cab-over area  
 Overhead bunk with 750 lb. capacity  
 Privacy curtain for cab area  
 JAYCOMMAND® powered by Firefly  
 84 in. interior ceiling height with padded vinyl ceiling  
 High-intensity, recessed LED ceiling lights  
 Vinyl plank flooring  
 Raised-panel, hardwood cabinetry throughout  
 Deluxe hidden cabinet hinges  
 Ball-bearing drawer guides  
 Jayco-exclusive, easy-operation legless dinette table  
 2-point lap safety belts in all designated seating locations  
 34,000 BTU auto-ignition furnace  
 Furrion® electric fireplace (N/A 37TS)  
 LED HD Smart Fire TV in living area  
 Cable TV hookup with RG-6 coax and video selector switch  
 Winegard 2.0 Wi-Fi/4G antenna  
 Wood-framed kitchen window with spice cabinets  
 2-burner induction cooktop  
 LED-lit, solid-surface kitchen countertops with integrated stainless steel sink and sink covers  
 Pull-out countertop extension (select models)  
 Water filtration system  
 One-piece, fiberglass shower with glass door, skylight and light  
 Porcelain toilet with foot flush  
 LED-lit, stainless-steel bathroom sink  
 Powered roof vent in bathroom with wall switch  
 Walk-around king-size bed with bedspread and nightstands  
 Under-bed storage  
 LED TV in bedroom  
 Large wardrobes  
 Bunks with industry-exclusive 300 lb. capacity each (37L)  
 Smoke alarm  
 Carbon monoxide detector

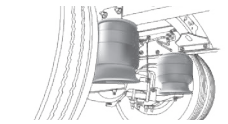
## OPTIONS

Power theater seating (N/A 37K, STD on 37M)  
 Freestanding table with 4 chairs (N/A 37L)  
 12 cu.ft. gas/electric, 4-door refrigerator  
 Combination washer/dryer (N/A 37K)  
 Stackable washer/dryer (37K)  
 Canadian Shaw® TRAV'LER® satellite dish  
 Winegard® TRAV'LER® satellite dish - DIRECTV®  
 Slide-out tray with 12V refrigerator cooler in basement  
 Hide-a-bed sofa (37M)



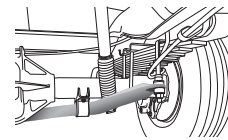
### COMPUTER-BALANCED DRIVESHAFT

Ensures smooth and efficient power transfer to the wheels



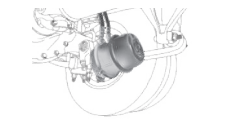
### REAR AIR SUSPENSION

Softens ride and improves handling



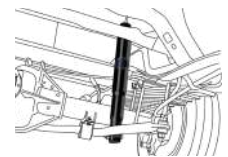
### HEAVY-DUTY REAR STABILIZER BAR

A larger bar and polyurethane bushings, instead of rubber, transfer power faster for extra support, more stability and easier handling



### FULL AIR BRAKES

Deliver robust stopping power, even on grades



### SACHS SHOCKS ABSORBERS

Large diameter tube design pairs gas and hydraulics to resist heat and pressure while independently adjusting to changing road conditions

FLOORPLAN	GVWR (lbs.)	GCWR (lbs.)	WHEEL BASE	OVERALL LENGTH	EXTERIOR HEIGHT WITH SATELLITE AND A/C	EXTERIOR WIDTH	INTERIOR HEIGHT	FRESH WATER CAPACITY (gal.)	GRAY WASTE WATER CAPACITY (gal.)	BLACK WASTE WATER CAPACITY (gal.)
37K	31,000	43,000	279"	39' 4"	13' 4"	101"	84"	72	51/40	40/23
37L	31,000	43,000	279"	39' 4"	13' 4"	101"	84"	72	50/31	50
37M	31,000	43,000	279"	39' 4"	13' 4"	101"	84"	72	50/31	50
37RB	31,000	43,000	279"	39' 4"	13' 4"	101"	84"	72	40/40	33/23
37TS	31,000	43,000	279"	39' 4"	13' 4"	101"	84"	72	40	50



# SENECA PRESTIGE

37K OPTIONS: C



## OPTIONS

A



Hide-a-bed

B



Theater Sofa

C



Freestanding Dinette

37L OPTIONS: B



37M OPTIONS: A, C



## EXTERIOR SELECTIONS



Beige Marvel Full-Body Paint



Blue Marvel Full-Body Paint



Grey Marvel Full-Body Paint



Red Marvel Full-Body Paint

# STANDARDS & OPTIONS

## CUSTOMER VALUE PACKAGE

JRIDE® PREMIUM: Computer-balanced driveshaft, rear air suspension, heavy-duty rear stabilizer bar, full air brakes, SACHS shocks  
 Dual-pane, tinted, safety-glass windows  
 Roof-mounted Girard® NOVA II dual-pitched patio awning with LED lights  
 2,000-watt pure sine wave inverter  
 Power cord reel with 50-amp service  
 Aqua-Hot® 250D hydronic water and heating system  
 9" Sony® infotainment center with Apple CarPlay® and Android Auto™  
 Backup and side-view cameras  
 21-cu.ft. side by side residential refrigerator with ice and water in door  
 Residential-size convection microwave

## DRIVING

Freightliner® S2RV chassis  
 GVWR - 31,000 lb.  
 GCWR - 43,000 lb.  
 Front axle - 10,000 lb.  
 Drive axle - 21,000 lb.  
 Cummins® ISB 6.7L 360 HP diesel engine with 800 ft.-lb. torque  
 Allison® 3000 MH automatic transmission  
 185-amp alternator  
 Michelin® tires- 275/80R 22.5 14 ply  
 Alcoa® aluminum rims  
 Engine exhaust brake  
 12,000-lb. rear hitch receiver  
 7-pin plug  
 Dual 12V chassis batteries - 1900 CCA  
 100 gal. fuel tank  
 10 gal. DEF tank  
 Deluxe heated, remote-controlled, side-view mirrors  
 Power driver and passenger seats  
 Power windows and door locks  
 A/C and cruise control  
 Tilt and telescoping leather-wrapped steering wheel  
 Auxiliary start switch

## EXTERIOR

StrongholdVBL™ roof, floor and sidewalls  
 Bead-foam insulation (R-24 max roof, R-9 max floor, R-5 max walls)  
 One-piece, crowned fiberglass roof  
 One-piece, seamless, fiberglass front and rear caps  
 Automotive-bonded panoramic window in front cap with power shade  
 Premium Sikkens full-body paint  
 Automatic hydraulic leveling jacks  
 Entrance door with industry's largest travel-view window  
 Electric-powered entrance step  
 Slideout cover awnings  
 Exterior entertainment center with outside speakers, LED TV mounted on swivel bracket and single-disc DVD/CD/AM/FM radio  
 Winegard® In-motion satellite dish  
 Lockable, pass-through storage compartments with metal slam latches

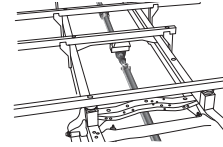
Chrome exterior baggage door handles and locks  
 Thetford® Sani-Con Turbo Macerator system  
 Exterior utility center  
 Winterization drain system  
 Black tank flush  
 Outside shower  
 12V demand water pump  
 Onan® 8,000-watt diesel generator with auto-gen start  
 (4) 6V AGM (220Ah) house batteries on slideout tray  
 190W solar panel with dual controller  
 Third brake light  
 Porch light with clear lens  
 Roof ladder

## INTERIOR

Custom-molded ABS surround in cab-over area  
 Overhead bunk with 750 lb. capacity  
 Privacy curtains for cab area  
 Carpeted cab floor mat  
 JAYCOMMAND® powered by Firefly (mobile app available)  
 High-intensity, recessed LED ceiling lights  
 Porcelain floor tile with heated floor mat  
 Raised-panel high-gloss hardwood cabinetry and stiles throughout  
 Deluxe hidden cabinet hinges  
 Jayco-exclusive, easy-operation legless dinette table  
 2-point lap safety belts in all designated seating locations  
 Dual 15,000-BTU A/C unit with heat pumps  
 Touchstone electric 5,000 BTU thermostat controlled fireplace  
 50 in. LED TV in living area (40 in. on 37K)  
 Cable TV hookup with RG-6 coax and video selector switch  
 Winegard 2.0 Wi-Fi/4G antenna  
 Wood-framed kitchen window with spice cabinets  
 2-burner induction cooktop  
 Solid-surface kitchen countertop with large integrated stainless steel sink with sink covers  
 Water filtration system  
 One-piece, fiberglass shower with glass door, skylight and light  
 Porcelain toilet with foot flush  
 Solid-surface bathroom sink  
 Powered roof vent in bathroom with wall switch  
 Walk-around, king-size bed with bedspread and nightstands  
 32" LED TV in bedroom  
 Large wardrobes  
 Bunks with industry-exclusive 300lb. capacity each (37L)  
 Smoke alarm  
 Carbon monoxide detector

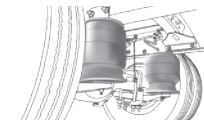
## OPTIONS

Power theater seating (N/A 37K, STD on 37M)  
 Canadian Shaw® TRAV'LER® satellite dish  
 Winegard® TRAV'LER® satellite dish - DIRECTV®  
 Winegard® TRAV'LER® satellite dish - Dish Network®  
 Stackable washer/dryer  
 Freestanding table with 4 chairs (N/A 37L)



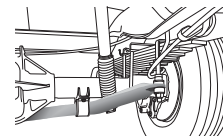
### COMPUTER-BALANCED DRIVESHAFT

Ensures smooth and efficient power transfer to the wheels



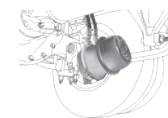
### REAR AIR SUSPENSION

Softens ride and improves handling



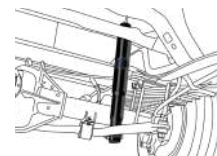
### HEAVY-DUTY REAR STABILIZER BAR

A larger bar and polyurethane bushings, instead of rubber, transfer power faster for extra support, more stability and easier handling



### FULL AIR BRAKES

Deliver robust stopping power, even on grades



### SACHS SHOCKS ABSORBERS

Large diameter tube design pairs gas and hydraulics to resist heat and pressure while independently adjusting to changing road conditions

FLOORPLAN	GVWR (lbs.)	GCWR (lbs.)	WHEEL BASE	OVERALL LENGTH	EXTERIOR HEIGHT WITH SATELLITE AND A/C	EXTERIOR WIDTH	INTERIOR HEIGHT	FRESH WATER CAPACITY (gal.)	GRAY WASTE WATER CAPACITY (gal.)	BLACK WASTE WATER CAPACITY (gal.)
37K	31,000	43,000	279"	39' 4"	13' 4"	101"	84"	72	51/40	40/23
37L	31,000	43,000	279"	39' 4"	13' 4"	101"	84"	72	50/31	50
37M	31,000	43,000	279"	39' 4"	13' 4"	101"	84"	72	40/40	33/23

# INTERIOR DESIGN



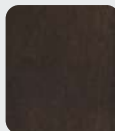
## WOOD SELECTIONS

### STONEWALL GREY



Wood

### AUBURN MAPLE

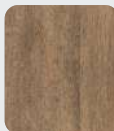


Wood



Accent

### ALMOND MAPLE



Wood



Accent



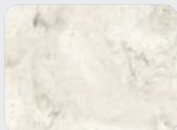
Flooring



Flooring



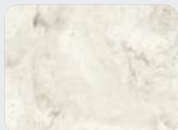
Flooring



Countertop



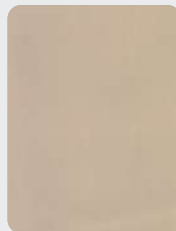
Countertop



Countertop

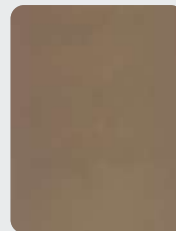
## FABRIC SELECTIONS

### EGGSHELL



Furniture

### PINECONE



Furniture

### ONYX



Furniture



Main Fabric



Main Fabric



Main Fabric

# THE JAYCO DIFFERENCE

## FREIGHTLINER



### A FOUNDATION BUILT TO DELIVER FOR THE LONG HAUL

1. Freightliner® S2RV chassis
2. Cummins® ISB 6.7L 360 HP diesel engine features a 43,000-lb. GCWR and a 31,000-lb. GVWR; a 12,000-lb. -rated hitch; 800-lb. torque; and a gas-strut assisted hood for easy engine access
3. Allison® 3000 MH automatic transmission delivers power, control and traction
4. 100-gal., single-fill, between-the-rails fuel tank
5. Michelin® 275/80R 22.5" tires

**2+3**  
YEAR | YEAR  
LIMITED | STRUCTURAL  
WARRANTY

#### TRAVEL WITH CONFIDENCE • NO ONE OFFERS A BETTER WARRANTY

At Jayco, we build our RVs to handle every adventure, then back them with our industry-leading 2+3 limited warranty. Our 2-year limited warranty has you covered for 2 camping seasons. That's 730 days. In addition, our 3-year structural limited warranty has you covered for 3 camping seasons or 1,095 days. You won't find a better limited warranty in the business, because the only strings that we attach are those that deliver the ultimate in reliability. That's the Jayco difference. So go explore. For a copy of our 2-year limited + 3-year structural limited warranty with complete terms and conditions, please contact your local Jayco dealer.

Meet your Jayco Dealer

**LA MESA REC  
VAN**

LaMesaRV.com  
800-496-8778



Scan QR  
code for  
specification  
definitions

Some specs at the time of print may include estimates.  
For the most updated information, please visit  
[Jayco.com/seneca](http://Jayco.com/seneca) or [Jayco.com/seneca-prestige](http://Jayco.com/seneca-prestige)

**Jayco, Inc. | P.O. Box 460 | Middlebury, IN 46540**

See dealer for further information and prices. All information in this brochure and on [www.jayco.com](http://www.jayco.com) is the latest available at the time of publication approval. Jayco reserves the right to make changes and to discontinue models without notice or obligation. Photography may show optional equipment or props used for decoration purposes only. RVs built for sale in Canada may differ to conform to Canadian codes. JAYCO and the JAYCO BIRD IN FLIGHT are registered trademarks of Jayco, Inc. Printed in USA 9/21 ©2021 Jayco, Inc. 257069



**Jayco - Part of the Jayco Family of Companies**